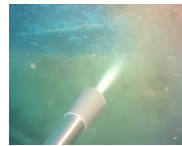


Electric High Pressure Unit

21 LPM @ 190 bar

The electric HDE190_21 high pressure unit is compatible with the CW300 long cavitation gun for removing medium fouling. The unit is built as a solid cart with 3 wheels for easy transportation and requires a 6,7KW three-phase power supply.



Specifications

Compatible with: CW300

Max. Pressure: 190 bar (2,755 psi)

Max. flow: 21 LPM (5.5 GPM)

Power: 6,7Kw, 400v, 50Hz

Weight: 63kg (140lbs)

Dimensions: 62x90x84cm
(24.4x35.4x33.1")

Features

- Removes medium fouling, debris and corrosion
- Heavy duty, 3 wheeled cart
- Stainless steel cover
- Readily serviceable brass suction filter
- Manual pressure valve
- Motor thermal protection